











9/19/2017

Worklist: 1898

<u>LAB_CASE</u>	<u>ITEM</u>	<u>TASK_ID</u>	<u>DESCRIPTION</u>	
C2017-1829	1	95198	AM 3 Urine Carboxy-THC	
C2017-1836	1	95199	AM 3 Urine Carboxy-THC	
C2017-1849	1	95200	AM 3 Urine Carboxy-THC	
P2017-2019	1	95201	AM 3 Urine Carboxy-THC	
P2017-2020	1	95202	AM 3 Urine Carboxy-THC	
P2017-2155	1	95203	AM 3 Urine Carboxy-THC	
P2017-2162	1	95204	AM 3 Urine Carboxy-THC	
P2017-2163	1	95205	AM 3 Urine Carboxy-THC	



Area Percent Report

Data Path : D:\DATA\2017\91917 AM3 Worklist 1898\
 Data File : 02401041.D
 Acq On : 19 Sep 2017 12:29
 Operator :
 Sample : BRC3 External Control
 Misc : Lot # 68440; AM# 3 worklist 1898
 ALS Vial : 24 Sample Multiplier: 1

Integration Parameters: autoint1.e
 Integrator: ChemStation

Method : D:\DATA\2017\2017 Reference Materials\Stimulant Drug Mix A.D\TOXI-A 10115.M
 Title :

Signal : EIC Ion 371.00 (370.70 to 371.70): 02401041.D\data.ms

peak #	R.T. min	first scan	max scan	last scan	PK TY	peak height	corr. area	corr. % max.	% of total
1	3.864	3	15	40	BV	244038	3260435	100.00%	81.646%
2	<u>4.638</u>	152	159	177	VB	44629	<u>732939</u>	22.48%	18.354%

Sum of corrected areas: 3993374

Signal : EIC Ion 473.00 (472.70 to 473.70): 02401041.D\data.ms

peak #	R.T. min	first scan	max scan	last scan	PK TY	peak height	corr. area	corr. % max.	% of total
1	4.640	139	160	178	BB 2	20141	347423	100.00%	83.171%
2	5.111	231	247	262	BB 2	2997	70298	20.23%	16.829%

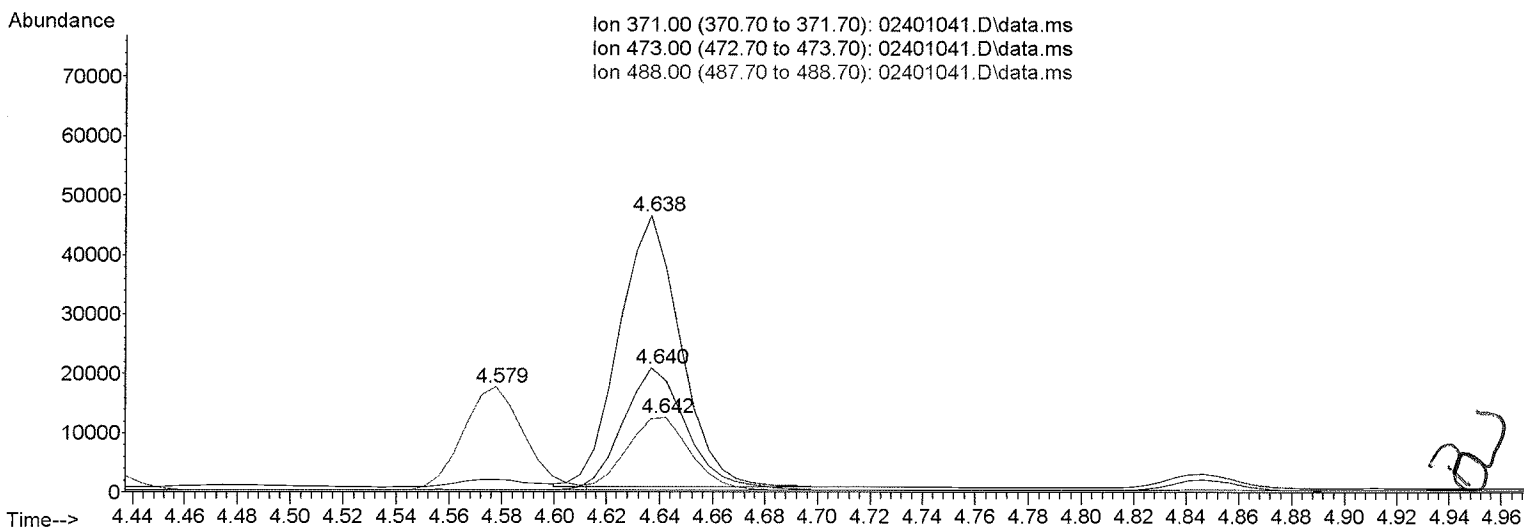
Sum of corrected areas: 417721

Signal : EIC Ion 488.00 (487.70 to 488.70): 02401041.D\data.ms

peak #	R.T. min	first scan	max scan	last scan	PK TY	peak height	corr. area	corr. % max.	% of total
1	4.429	113	120	130	BB	4154	66773	23.61%	11.972%
2	4.579	139	148	154	BV	17130	282871	100.00%	50.716%
3	4.642	154	160	177	VB	12326	208115	73.57%	37.313%

Sum of corrected areas: 557759

TOXI-A 10115.M Tue Sep 19 12:37:00 2017



2.4.4 Carboxy-THC QC Calculations

Run Date: **9/19/2017**

Case Calculations:

Lab Case #: **BRC3-68430**

EIC Ion 371 Corr. Area: **732939**

EIC Ion 473 Corr. Area: **347423**

EIC Ion 488 Corr. Area: **208115**

473:371 Ratio: **0.474**

488:371 Ratio: **0.284**

Quality Control Calculations:

Retention Time acceptable range: **4.547** to **4.737**

	<i>1st ctrl</i>	<i>2nd ctrl</i>
EIC Ion 371 Corr. Area:	4003965	4753163
EIC Ion 473 Corr. Area:	1824530	2158763
EIC Ion 488 Corr. Area:	1115665	1314225

Approximate minimum corrected area of 371 ion: ~ **800793**

<i>Ratio of 473:371</i>			
<i>1st ctrl</i>	<u>0.456</u>	<i>2nd ctrl</i>	<u>0.454</u>
		<i>avg.</i>	0.455

Accepted Range
(+/- 20%) **0.364 - 0.546**

<i>Ratio of 488:371</i>			
<i>1st ctrl</i>	<u>0.279</u>	<i>2nd ctrl</i>	<u>0.276</u>
		<i>avg.</i>	0.278

Accepted Range
(+/- 20%) **0.222 - 0.333**

Carboxy-calculation sheet
Revision 0 effective date 10/23/13
Issuing authority: Quality Manager



Area Percent Report

Data Path : D:\DATA\2017\91917 AM3 Worklist 1898\
 Data File : 02301040.D
 Acq On : 19 Sep 2017 12:19
 Operator :
 Sample : Negative C-THC Control
 Misc : Negative lot 91917: AM# 3 worklist 1898
 ALS Vial : 23 Sample Multiplier: 1

Integration Parameters: autoint1.e
 Integrator: ChemStation

Method : D:\DATA\2017\2017 Reference Materials\Stimulant Drug Mix A.D\TOXI-A 10115.M
 Title :

Signal : EIC Ion 371.00 (370.70 to 371.70): 02301040.D\data.ms

peak #	R.T. min	first scan	max scan	last scan	PK TY	peak height	corr. area	corr. % max.	% of total
1	3.867	5	16	27	BV	367727	4953355	100.00%	91.274%
2	3.946	27	31	40	PV 2	4733	71035	1.43%	1.309%
3	4.038	40	48	59	PV	9988	179654	3.63%	3.310%
4	4.430	115	121	128	VV	10947	167154	3.37%	3.080%
5	4.580	143	148	155	VV	3452	55706	1.12%	1.026%

Sum of corrected areas: 5426904

Signal : EIC Ion 473.00 (472.70 to 473.70): 02301040.D\data.ms

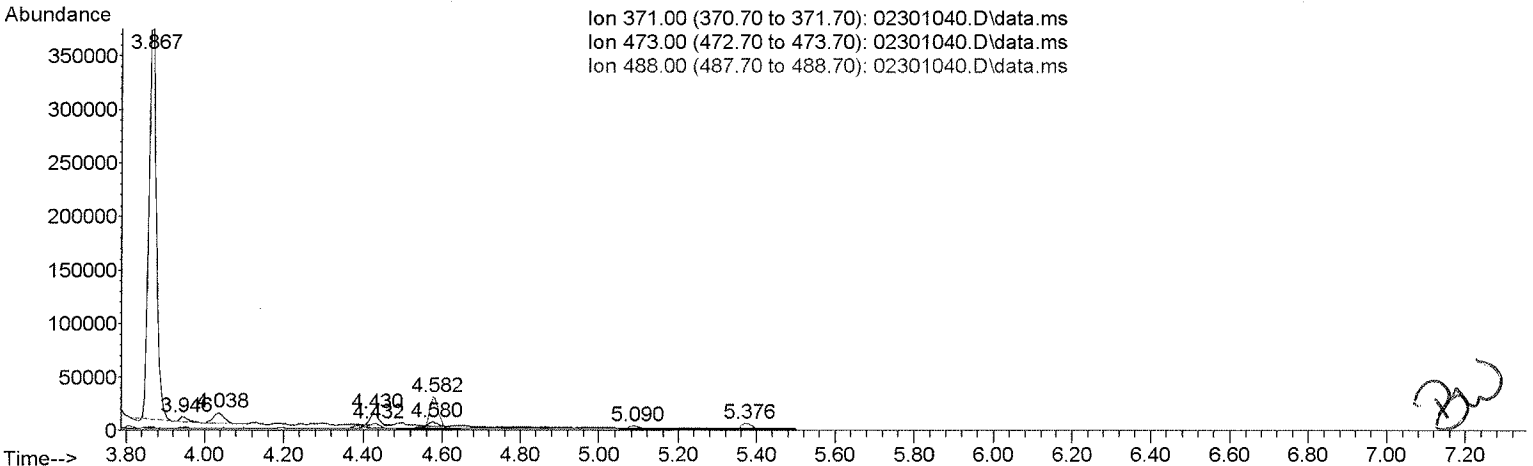
peak #	R.T. min	first scan	max scan	last scan	PK TY	peak height	corr. area	corr. % max.	% of total
No peaks were detected using the method integration parameters!									

Signal : EIC Ion 488.00 (487.70 to 488.70): 02301040.D\data.ms

peak #	R.T. min	first scan	max scan	last scan	PK TY	peak height	corr. area	corr. % max.	% of total
1	4.432	101	121	142	VV 2	5125	170042	34.97%	19.605%
2	4.582	142	149	161	VV	29698	486214	100.00%	56.058%
3	5.090	236	243	261	VB 2	3431	96327	19.81%	11.106%
4	5.376	283	296	306	BV	5492	114757	23.60%	13.231%

Sum of corrected areas: 867340

TOXI-A 10115.M Tue Sep 19 12:35:57 2017



Area Percent Report

Data Path : D:\DATA\2017\91917 AM3 Worklist 1898\
 Data File : 02201039.D
 Acq On : 19 Sep 2017 12:10
 Operator :
 Sample : Positive C-THC Control
 Misc : C-THC lot#FE03121501 in negative lot 91917:AM# 3 Worklist 1898
 ALS Vial : 22 Sample Multiplier: 1

Integration Parameters: autoint1.e
 Integrator: ChemStation

Method : D:\DATA\2017\2017 Reference Materials\Stimulant Drug Mix A.D\TOXI-A 10115.M
 Title :

Signal : EIC Ion 371.00 (370.70 to 371.70): 02201039.D\data.ms

peak #	R.T. min	first scan	max scan	last scan	PK TY	peak height	corr. area	corr. % max.	% of total
1	3.871	5	17	28	BV	359354	4617604	100.00%	50.961%
2	3.951	28	32	41	PV 2	4188	58111	1.26%	0.641%
3	4.042	41	48	60	PV	9657	173810	3.76%	1.918%
4	4.435	116	121	129	VV	10325	159921	3.46%	1.765%
5	4.585	144	149	154	PV	3163	47722	1.03%	0.527%
6	4.647	154	161	185	VV	246173	4003965	86.71%	44.188%

Sum of corrected areas: 9061133

Signal : EIC Ion 473.00 (472.70 to 473.70): 02201039.D\data.ms

peak #	R.T. min	first scan	max scan	last scan	PK TY	peak height	corr. area	corr. % max.	% of total
1	4.649	153	161	180	PV	111463	1824530	100.00%	100.000%

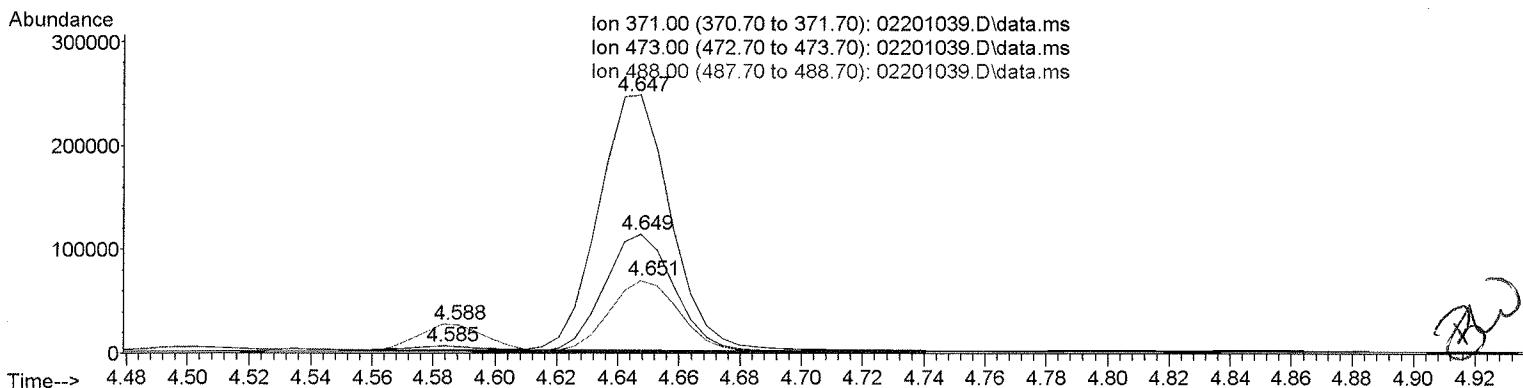
Sum of corrected areas: 1824530

Signal : EIC Ion 488.00 (487.70 to 488.70): 02201039.D\data.ms

peak #	R.T. min	first scan	max scan	last scan	PK TY	peak height	corr. area	corr. % max.	% of total
1	4.438	102	122	131	PV 2	5172	119527	10.71%	6.876%
2	4.588	139	150	156	BV	26789	429708	38.52%	24.720%
3	4.651	156	162	178	VV	67517	1115665	100.00%	64.182%
4	5.384	287	298	308	BV 2	3374	73386	6.58%	4.222%

Sum of corrected areas: 1738285

TOXI-A 10115.M Tue Sep 19 12:35:34 2017



Area Percent Report

Data Path : D:\DATA\2017\91917 AM3 Worklist 1898\
 Data File : 02201060.D
 Acq On : 19 Sep 2017 15:26
 Operator :
 Sample : Positive C-THC Control
 Misc : C-THC lot#FE03121501 in negative lot 91917:AM# 3 Worklist 1898
 ALS Vial : 22 Sample Multiplier: 1

Integration Parameters: autoint1.e
 Integrator: ChemStation

Method : D:\DATA\2017\2017 Reference Materials\Stimulant Drug Mix A.D\TOXI-A 10115.M
 Title :

Signal : EIC Ion 371.00 (370.70 to 371.70): 02201060.D\data.ms

peak #	R.T. min	first scan	max scan	last scan	PK TY	peak height	corr. area	corr. % max.	% of total
1	3.864	5	15	26	BV	569035	7329212	100.00%	58.066%
2	3.943	26	30	40	PV 2	5751	85442	1.17%	0.677%
3	4.035	40	47	59	PV	11772	218689	2.98%	1.733%
4	4.426	114	120	127	VV	11303	168363	2.30%	1.334%
5	4.575	142	148	152	PV	4411	67433	0.92%	0.534%
6	4.637	152	159	182	VV	295265	4753163	64.85%	37.657%

Sum of corrected areas: 12622302

Signal : EIC Ion 473.00 (472.70 to 473.70): 02201060.D\data.ms

peak #	R.T. min	first scan	max scan	last scan	PK TY	peak height	corr. area	corr. % max.	% of total
1	4.387	85	113	121	PV 2	2743	72499	3.36%	3.249%
2	4.639	151	159	176	BV	132989	2158763	100.00%	96.751%

Sum of corrected areas: 2231262

Signal : EIC Ion 488.00 (487.70 to 488.70): 02201060.D\data.ms

peak #	R.T. min	first scan	max scan	last scan	PK TY	peak height	corr. area	corr. % max.	% of total
1	4.427	101	120	129	PV 2	3471	106046	8.07%	4.834%
2	4.578	136	148	154	VV	42865	674999	51.36%	30.772%
3	4.641	154	160	175	VV	81509	1314225	100.00%	59.913%
4	5.369	285	295	304	BV 3	4782	98287	7.48%	4.481%

Sum of corrected areas: 2193556

TOXI-A 10115.M Tue Sep 19 15:35:35 2017

